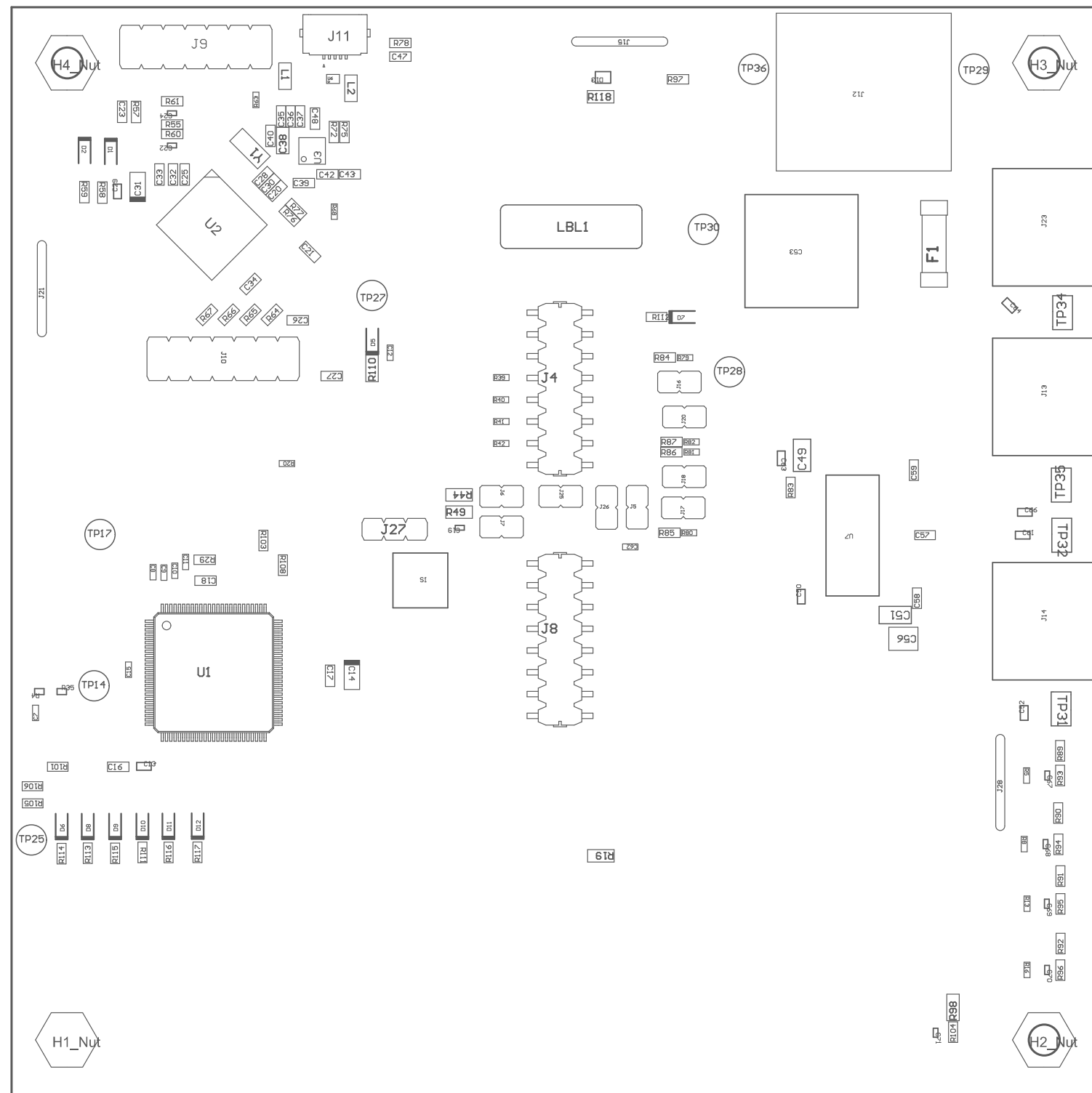


ZZ1 ■ Install label in silkscreened box after final wash. Text shall be 8 pt font. Text shall be per the Label Table in the PDF schematic.

Z22 ■ These assemblies are ESD sensitive, ESD precautions shall be observed.

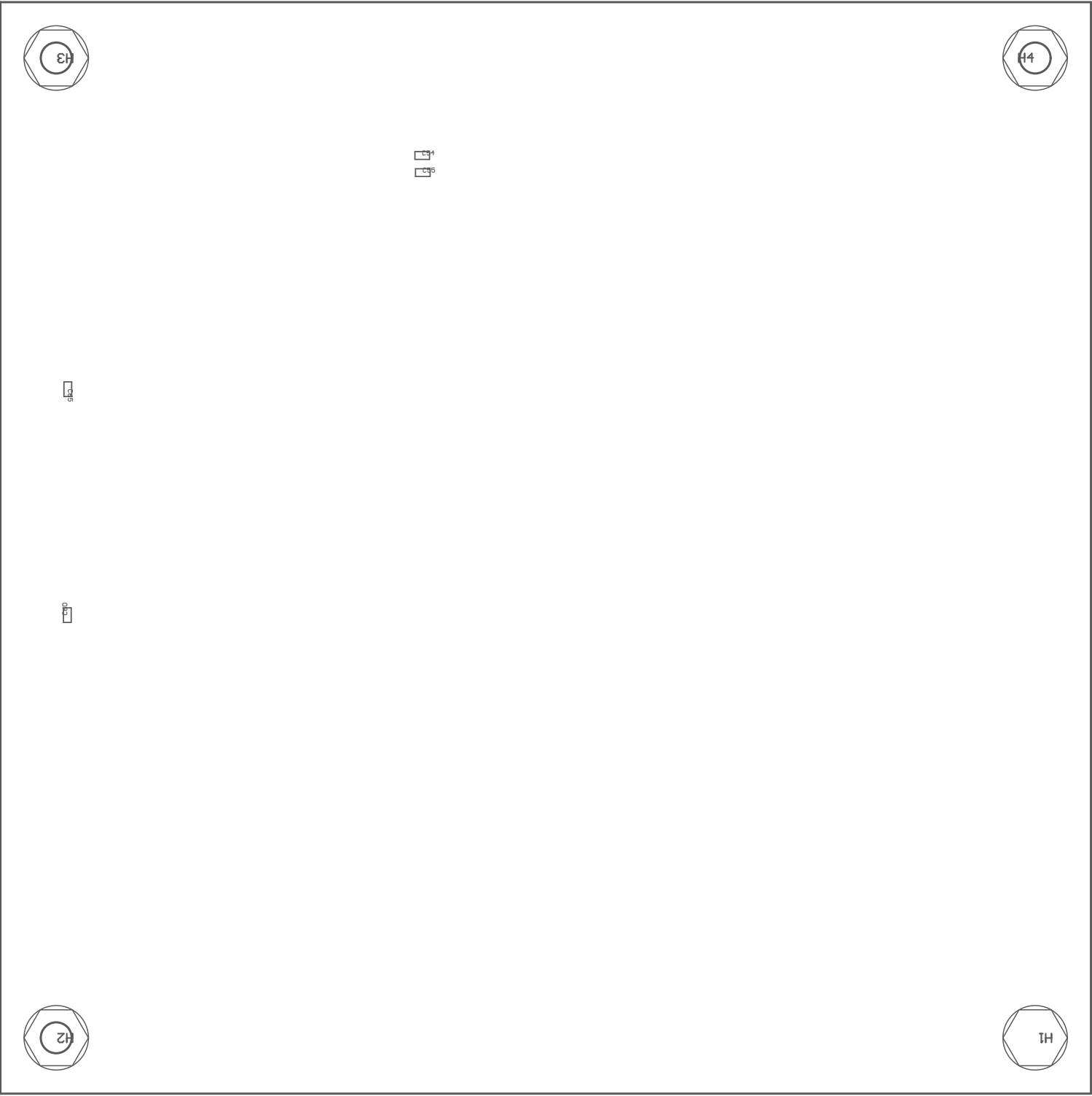
ZZ3 ■ These assemblies must be clean and free from flux and all contaminants. Use of no clean flux is not acceptable.

ZZ4 ■ These assemblies must comply with workmanship standards IPC-A-610 Class 2, unless otherwise specified.



COMPONENTS MARKED 'DNP' SHOULD NOT BE POPULATED.
ASSEMBLY VARIANT: 004

PCB VIEWED FROM TOP SIDE	BOARD #: MD040	REV: A	SUN REV: 40a3f0cfbcc7abc6bcb240f01f24a5fc734ee022 [Modified]
	TID #: N/A		
PLOT NAME = Top Assembly Drawing	GENERATED : 12/9/2022 9:46:29 AM		TEXAS INSTRUMENTS



COMPONENTS MARKED 'DNP' SHOULD NOT BE POPULATED.
ASSEMBLY VARIANT: 004



PCB VIEWED FROM BOTTOM SIDE	BOARD #: MD040	REV: A	SUN REV: 40a3f0cfbcc7abc6bcb240f01f24a5fc734ee022 [Modified]
	TID #: N/A		
PLOT NAME = Bottom Assembly Drawing	GENERATED : 12/9/2022 9:46:30 AM		TEXAS INSTRUMENTS